

EAST LAKE FOUNDATION

Transforming Place, Building Promise



Our East Lake Mission

The mission of the East Lake Foundation is to provide the tools for families of The Villages of East Lake and students in the Charles R. Drew Charter School education pipeline to build a better life for themselves and future generations through education, mixed-income housing and community wellness.

The East Lake Foundation serves as the lead organization and engages a network of Foundation-run programs and integral partnerships to transform place and build promise.

**Break the cycle
of poverty – create a
sustainable and vibrant community**

Enabled through


**Cradle
-To-
College
Education**


**Mixed-
Income
Housing**


**Community
Wellness**

EAST LAKE FOUNDATION

East Lake Foundation: Transforming Place, Building Promise

Established in 1995, the East Lake Foundation turned one of the nation's most violent public housing projects into a national model for community redevelopment. East Lake has evolved from being a great example of community redevelopment to being a great neighborhood in its own right. By working with residents and expert public and private partners, the Foundation now provides comprehensive programs and facilities that attract people of all ages and incomes seeking a sense of community.

The East Lake Foundation's programs include The Villages of East Lake, a mixed-income apartment community; the Resident and Community Support Program; educational programs like CREW Teens, Drew Charter After School Program, and Tom and Anne Cousins Scholarships; and in the area of wellness, The First Tee® of East Lake, and coming soon, East Lake Healthy Connections.

The East Lake Foundation has vital partners: East Lake Sheltering Arms and the East Lake Family YMCA provide early learning opportunities; the East Lake Family YMCA also provides community recreation and wellness; and the Southeastern Horticultural Society cultivates the East Lake Community Learning Garden.

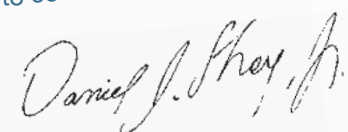
Dear Friends,

It's hard to believe 2013 went by so quickly. It was a year filled with progress and many accomplishments. We kept our promise to complete East Lake's education pipeline. We began construction on the Drew Charter School Junior and Senior Academy at the Charlie Yates Campus and successfully closed its ambitious capital campaign. It will afford us the tools and resources to build bright futures with our East Lake youth as they complete high school and prepare for college and life. We witnessed an increase in the number of children and their families served in our wellness programs and engaged more residents in The Villages of East Lake.

Our model for community redevelopment – a focus on mixed-income housing, cradle-to-college education and community wellness backed by a lead organization, the East Lake Foundation – works. It works because of our partners whose commitment and capacity extend our ability to reach many families. It works because of generous individuals whose support makes our programs and services possible. It works because at the heart of our mission is the belief that all people can realize their potential in a community abundant with hope and ripe with opportunity. In East Lake, families live, learn, earn and grow. You will enjoy hearing their voices as you read this annual report.

I am grateful to lead, to listen and to learn along the way in an amazing community cited by United States Housing and Urban Development Secretary Shaun Donovan and Federal Reserve Bank Chairman Sam Bernanke as one of promise for the nation.

On behalf of the East Lake Foundation Board and staff, I thank you for your generous and continued support. It allows us to sustain our success and ensure East Lake remains a vibrant community, as it should be. Together, we create access and expand opportunity for young people and their families to meet their full potential. With great pride yet humility, I ask you to continue supporting our work because there's more to be done.



Daniel J. Shoy, Jr.
President
East Lake Foundation

Cradle-to-College Education

Getting a Jump-Start on Success

Research has proven that early learning is critical to building a foundation for academic success. The East Lake Sheltering Arms Early Education and Family Center and the YMCA East Lake Early Learning Academy serve children from birth to pre-K, preparing them for Kindergarten with the social, emotional and literacy development skills needed to learn.

Carrying Achievement Beyond the Classroom

Serving more than 375 students daily, the Drew Charter After School Program provides a wide array of academic, enrichment and cultural activities that strategically reinforce and supplement Drew Charter School's curriculum. More than 60 enrichment classes expose students to everything from chess and yoga to martial arts and Mandarin. The After School Program aims to eliminate the achievement and opportunity gap and equip students with the confidence and skills required to overcome disadvantaged circumstances.

Success Goes Full-STEAM Ahead

With a strong focus on STEAM (Science, Technology, Engineering, Arts and Mathematics), students in grades pre-K through nine at the Charles R. Drew Charter School get a comprehensive education. Teaching and learning strategies are based on critical thinking, collaboration, creativity, innovation and problem solving – just a few of the many reasons why 99 percent of Drew students in grades 3-8 met or exceeded state standards in reading and language arts in 2013. This continual focus on improvement is why Drew Charter School students are outpacing their peers across the state.

Preparing for Professional Success

Creating Responsible, Educated and Working Teens – that's the goal of CREW Teens, a college readiness program that helps East Lake teens complete high school and prepare for higher education and careers. In 2013, CREW Teens reached new heights thanks to the volunteer efforts of our corporate partners. The fourth annual CREW Teens Summer Institute program provided teens with four-week course offerings incorporating interactive classroom instruction and real-life experiences facilitated by Atlanta professionals. Many CREW Teens are the first in their families to pursue higher education.

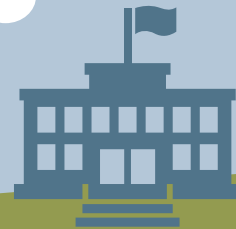
Cousins Scholarships Offer Another Degree of Success

Eight graduating seniors, all active in CREW Teens, earned Tom and Ann Cousins Scholarships in 2013. A total of 49 students selected for their academic performance, leadership and community service have received Cousins Scholarships since the program began in 2008.

"I can honestly say that I would not be where I am today without the East Lake Foundation. The East Lake Foundation has played an active, vital and consistent role in my education for 13 years. Attending Drew Charter School and participating in the CREW Teens program equipped me with the academic, social and cultural capital I needed to be successful in college. Because I want to see programs like this continue for the youth in my community, I make it a priority to give back to the East Lake Foundation by donating and volunteering."

– **Douglas Peters**

*Drew Charter School Alumnus,
Masters of Higher Education Student at
Georgia Southern University*



320
children served by East Lake Foundation early learning partners



85%
of active CREW Teens graduated on time



1
rank of Drew Charter School among Atlanta Public Schools grades K-5



3
rank of Drew Charter School among Atlanta Public Schools grades 6-8



Mixed-Income Housing

Providing a Place to Call Home

The East Lake Foundation spearheaded the development of The Villages of East Lake to replace the violent and dilapidated East Lake Meadows public housing project of the mid-1990s. Today, The Villages of East Lake offer safe and well-maintained apartments to diverse families. Fifty percent of the units are affordable-rate apartments while the balance rent at market rates. Living in The Villages also gives families first priority to other programs under the East Lake Foundation umbrella that improve their quality of life – from Drew Charter School and early learning program admission to The First Tee® of East Lake golf instruction, community gardening beds and college readiness support.

Beyond Development to Developing Community

In 2011, the Resident and Community Support Program (RCSP) was introduced to develop a sense of community while providing resources to help residents thrive. Programs are focused on economic stability and community engagement and include career development, financial literacy and community-building events.

In 2013, RCSP engaged residents and community members in 76 programs/activities in the following categories:

Economic Stability

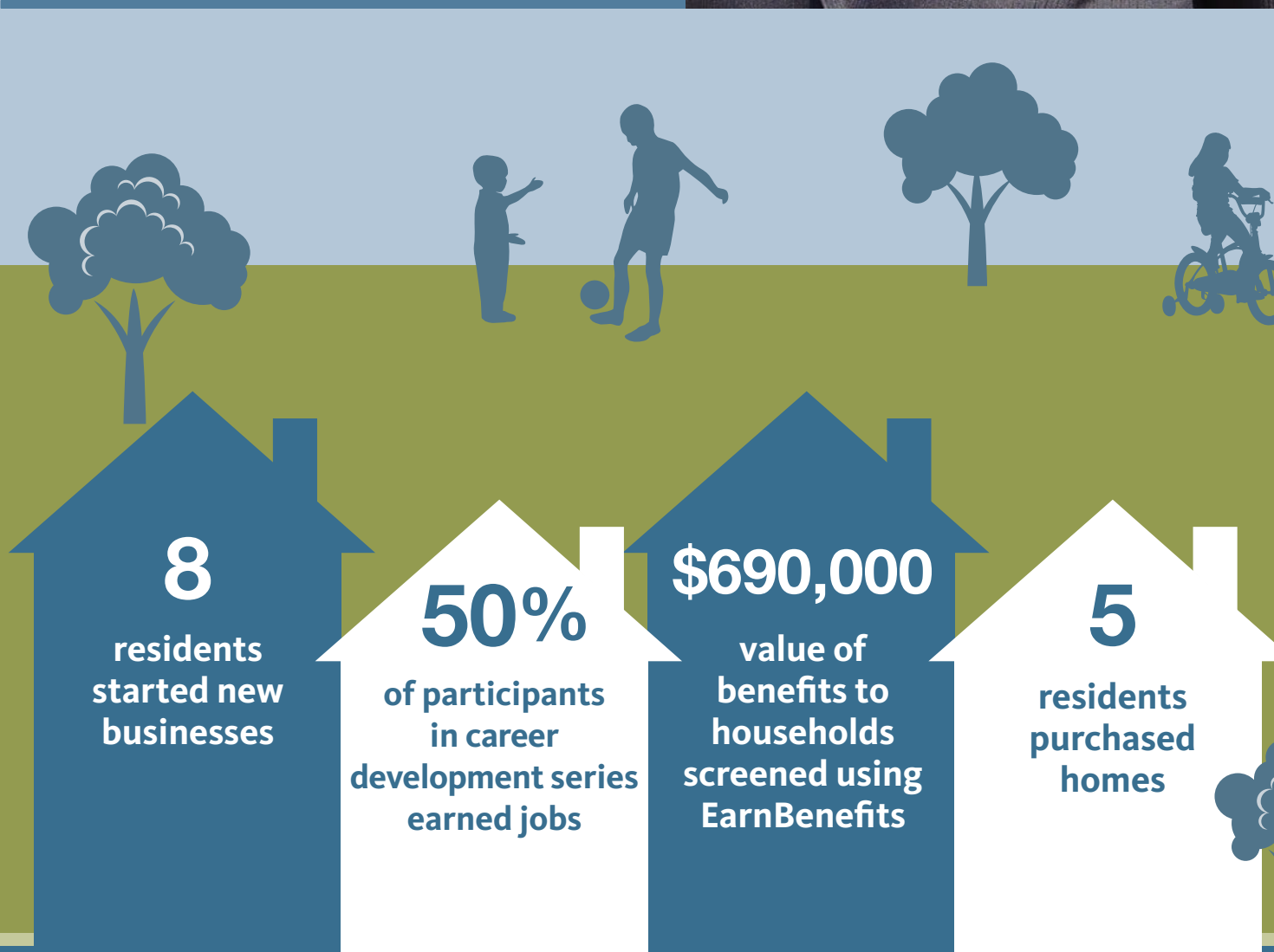
- Career Development Series
- Entrepreneurship Series
- Level Up Financial Management Series
- Homebuyer Education
- EarnBenefits Screening
- Kaiser Permanente Bridge Health Insurance Program
- DeKalb Workforce Mobile Career Center

Community Engagement

- Family Fun Fit Festival
- Summerfest Family Festival
- Back-to-School Jam and Community Resource Fair
- Healthy Cooking Demonstrations
- Health Activities
- Healthy Relationship Seminars
- Seasonal Holiday Celebrations
- Community Block Parties

“The Resident and Community Support Program has had such a positive impact on my life and my family by exposing us to so many opportunities. I had lost hope about my career search until I got involved with RCSP, and that motivated me to keep going. I tell everyone in The Villages to get connected and stay connected with RCSP because they really care about the families and make sure we are successful. I love my job at Drew Charter School, my kids love their school and we love the community.”

– **Cenobia Hilton**
The Villages of East Lake resident



Community Wellness

Putting Youth on the Course to Success

While learning the sport of golf, children ages 5 to 17 in Atlanta's East Lake neighborhood are also exposed to the values of the game as part of The First Tee® of East Lake. The year-round program uses golf principles like discipline, hard work and integrity to enhance both academic achievement and life skills. It also provides opportunities for East Lake youth to incorporate physical exercise and establish healthy habits early in life.

Operating out of the Charlie Yates Golf Course, kids learn responsibility, integrity and respect while walking the links. The curriculum emphasizes "Nine Healthy Habits" that promote healthy, active lifestyles. Each year The First Tee of East Lake exposes more than 650 community youth to the game of golf.

Making Fitness Par for the Course

Established in 2000, the East Lake Family YMCA's 61,000 square-foot, state-of-the-art facility provides the community with fitness and wellness services for year-round healthy lifestyles. The East Lake YMCA serves as the physical education partner for Drew Charter School, serving nearly 900 students in grades pre-K through fifth. In 2013, the YMCA opened its new Youth and Teen Development Center, which includes an outdoor family pool with a waterslide, a digital media center, gymnasium and cyber cafe for teens ages 12 to 17.

Harvesting Health & Hands-On Education

Residents can grow organic produce and participate in horticultural learning at the East Lake Community Learning Garden, a collaboration with the Southeastern Horticultural Society. Serving several thousand neighborhood residents each year, the Community Learning Garden provides fresh, local and nutritious produce and interactive workshops from the Southeastern Horticultural Society. Residents of East Lake also learn agricultural job training skills, while Drew Charter School students benefit from a real life learning lab.

"I've seen a lot of children use the skills they've learned from The First Tee to do the right thing, make the right decisions and grow from those experiences. Golf itself is a lot like life and it requires you to be honest. With The First Tee, kids learn responsibility and integrity so they understand it requires hard work to get what you want in life. That all plays into our Nine Healthy Habits, one of the most important being using your mind as a powerful tool to have a vision for the future."

– Jeff Dunovant

Assistant Director, The First Tee® of East Lake,
2012 PGA Georgia Section Junior Golf Leader



650+
number of
students The
First Tee of
East Lake
served

3
First Tee of
East Lake
students awarded
Bill Dickey
Association
Scholarships

100
volunteers
supported
The First Tee
of East Lake
program

5
First Tee of
East Lake
alumni
currently play
college golf

Golf with a Purpose: Driving Amazing Support

The East Lake Golf Club with its "Golf with a Purpose" motto is a committed partner of the East Lake Foundation. As the home course of legendary golfer Bobby Jones and the oldest golf course in the city of Atlanta, the Club is not only historic, but also philanthropic. Proceeds from operations help support the East Lake Foundation.

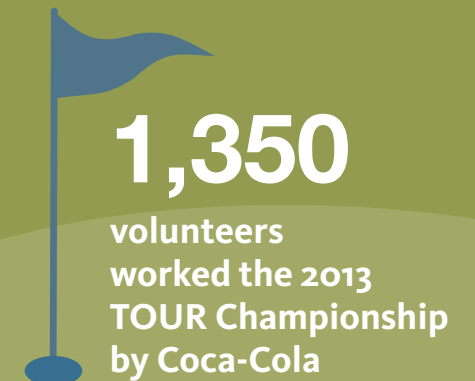
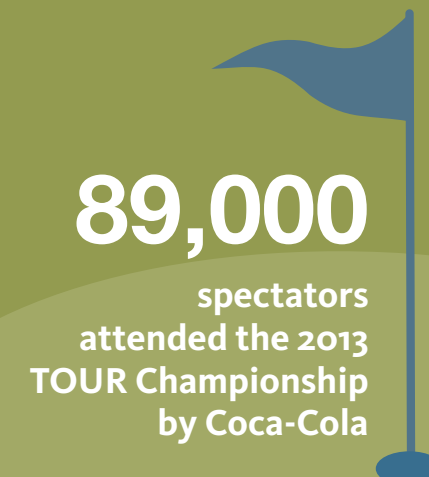
Golf with a Purpose is in the spotlight each fall when the 30 best golfers in the world visit East Lake for the TOUR Championship by Coca-Cola held at the East Lake Golf Club. The East Lake Foundation and TOUR Championship by Coca-Cola have a strong relationship that dates back to 1998. In 2013, the event raised \$2 million dollars – funds that are donated to the East Lake Foundation and The First Tee® of East Lake. The East Lake Foundation is grateful to the thousands of golf fans, PGA TOUR players, PGA TOUR, Coca-Cola Company and the thousands of volunteers who make the tournament possible each year. Their dedication to the TOUR Championship by Coca-Cola and the East Lake Foundation makes this event truly unique in the world of sports.

"As someone who grew up not far from East Lake, it has been an honor to be a part of the TOUR Championship by Coca-Cola. Last year, we started the 'Volunteer Tributes' program allowing anyone to give a gift to the East Lake Foundation in honor of or in memory of a volunteer. It's wonderful this tournament thinks so highly of its volunteers that they would create a program like this. It makes me a part of a wonderful charity and it's the best volunteer experience that I have all year."

– Julie Hudson

*8th year as TOUR Championship by Coca-Cola volunteer;
Chair of Veranda Suites at 17th Hole*

Julie Hudson (right) with fellow TOUR Championship by Coca-Cola volunteers Jayne Warren Belk (left) and Doug Weston (center).



Transforming Place, Building Promise in 2014

Thanks to the generosity of our donors, the East Lake Foundation has completed the \$73 million capital campaign for the Charles R. Drew Charter School Junior and Senior Academy. Set to open in July 2014, the new 200,000 square-foot campus will allow Drew Charter School to expand enrollment to include high school students.

The new facility is expected to serve 1,000 sixth through twelfth graders in Atlanta's East Lake community and employ an estimated 485 teachers and staff by 2017. The LEED-certified building will include:

- Flexible learning suites to nurture collaboration
- Seven project learning labs and seven state-of-the-art science labs
- Two specialty labs for engineering and design
- Integrated arts studios
- 500-seat performing arts center serving the school and the East Lake community
- Two gymnasiums and a full-size track and field for athletics and community wellness

Drew Charter School opened in 2000 as the first charter school in Atlanta.

In Drew's first year of operations, it was ranked 69th, the worst performing school in Atlanta Public Schools (APS). Today, Drew is ranked first among all APS elementary schools and third among APS middle schools.

During the 2012-2013 academic year, Drew was named Georgia Charter School of the Year and was recognized as one of the "25 Coolest Schools in America" by *Scholastic Parent & Child Magazine*.

With the addition of the Senior Academy, Drew's academic successes will extend through the high school years, completing the East Lake Foundation's educational vision – to provide students with a cradle-to-college education.



2013 FINANCIAL SUMMARY

REVENUE BY SOURCE
TOTAL: \$5,454,400

EXPENSE BY CATEGORY
TOTAL: \$3,637,516

40%

CONTRIBUTIONS
& GRANTS

57%

PROGRAM

24%

ADMINISTRATIVE
& GENERAL
OPERATING

37%

TOUR
CHAMPIONSHIP

23%

OTHER

19%

DEVELOPMENT &
MARKETING/
COMMUNICATIONS

Visionary

\$25,000 or more

Anonymous
Atlas Settlement Group, Inc.
Bank of America Charitable Foundation
Belk, Inc.
The Belk Foundation
CF Foundation
Capitol City Bank and Trust Company
Chick-fil-A Bowl
The Coca-Cola Company
The Coca-Cola Foundation
The Community Foundation for Greater Atlanta
The Estate of Roger L. Cordes
Ann and Thomas G. Cousins
James M. Cox Foundation
Cox Media Group-Atlanta Radio*
Elizabeth and John H. Crawford, IV
E*TRADE
Mr. and Mrs. Gregory J. Giornelli
The Wilbur and Hilda Glenn Family Foundation
Douglas J. Hertz Family Foundation/
United Distributors
Humana Foundation
The Imlay Foundation, Inc.
Tracey and Charles Joyner
MAG Mutual Insurance Co.
MedAssets
Patrick Malloy Companies, LLC
Nonami Foundation, Inc.
PGA TOUR, Inc.
RockTenn Co.
Rotary Educational Foundation of Atlanta, Inc.
The F.T. Stent Family Foundation
TOUR Championship by Coca-Cola
Waffle House
Williams Services Industrial Group, LLC
Delia and Robert Yanker

Innovator

\$10,000 – \$24,999

Anonymous
Mr. and Mrs. John D. Arndt
Atlanta Foundation
Shea Campbell
Cessna Aircraft Company*
Cummins Power South, LLC
David Edmiston
Sharon and Jim D. Edwards
Elavon/US Bank
First Data Corp.
FedEx
For The Kid In All Of Us*
John H. and Wilhelmina D. Harland
Charitable Foundation, Inc.
Kaiser Foundation Health Plan of Georgia, Inc.
Mr. and Mrs. Charles F. Palmer
PwC*
Alexandra Robertson
Sartain Lanier Family Foundation
SiteMinis*
Wells Fargo
World Golf Foundation

Leader

\$5,000 – \$9,999

The May P. and Francis L. Abreu Charitable Trust
Besse Johnson and George Blanton
Allen Memorial Foundation
Angel Oak Capital Advisors LLC
Atlanta Braves Foundation
Bank of America United Way Campaign
Scott and Lauren Bingham
Lee and Bob Birdsong
Lane and Richard Courts Family Fund
Bert Ellis
Ernst and Young LLP
Fidelity Charitable Gift Fund
John and Mary Franklin Foundation, Inc.
The Knox Foundation
Thomas H. Lanier Family Foundation
Mr. and Mrs. Chad Parker
Patrick Family Foundation
PNC
Bert and Rhonda Ponder
David and Cecelia Ratcliffe
Mr. and Mrs. Ray M. Robinson

Southern Company
Turner Broadcasting System, Inc.
Christopher Womack

Builder

\$2,500 – \$4,999

Atlantic Trust Company
William Bates Brown
Chatham Capital
The Club of Hearts, Inc.
The Cross Foundation
Dollar General Literacy Foundation
J. Alexander Miller Douglas, Jr.
Dr. and Mrs. J. Don Edwards
Olivia R. Gardner Foundation
Jack and Anne Glenn Charitable Foundation
Sally and Warren Jobe
The Charles and Esther Lee Kimerling Charitable Foundation
Dr. Cynthia Kuhlman and Dr. Kip Sengstock
Liz and Mark Lazarus
Catherine and Mark McGahan
Tim Minard
MacArther Plumart
Mary Ann Polk
James F. Pope
Publix Super Markets Charities
Julia and Hamilton Reynolds
Stanley Family Foundation
State Bank and Trust Company
Sunbelt Structures, Inc.
Tull Charitable Foundation
Cary and Herron Weems
Benjamin Taylor White
Michael A. and Katherine K. Woocher

Collaborator

\$1,000 – \$2,499

Pam and Rick Burton
Karen and Tom Chapman
Sidney and Don Childress
Community Foundation for Northeast Georgia
Conlee Family Supporting Foundation
Council for Quality Growth
Mr. and Mrs. Robert A. Crosby
Susan R. Dansby
Paul J. Farrell
First Communities
Shirley C. Franklin
Connie and John Frazer
The Gause Foundation
Carol and Larry Gellerstedt
Georgia Center for Nonprofits
Kristen Loehr and Drew Giblin
Albert A. Gore III
Susan Harrod
Mr. and Mrs. James A. Hatcher
Kevin D. Johnson
Mr. and Mrs. Mitchell W. Kahlert
Donald and Marilyn Keough Foundation
Katherine Lindholm and Neil Lewis
Amy Macklin and Erik Speakman
The Billi Marcus Foundation
Maverick Capital Foundation
Frank and Jan Merritt
Eileen and Chris Millard
Wendy and Matt Miller
Joel Murphy
The National Christian Foundation
Carol and Tim Naughton
William Pate
Peachtree Planning Corporation
Jonathan Rich
Ms. Betty A. Londergan and Dr. Lawrence M. Schall
John and Kathryn Smoltz
Miles Snowden
Patty Stafford
SunTrust Foundation
Mrs. Nancy Surbaugh
TTV Capital, LLC
Thomas Thomasma
Bert Thornton
Uzun and Case Engineers, LLC
John M Walker
Wells Fargo Community Support Campaign
Sherry and Billy Wren
Lois and Danny Yates

Partner

\$250 – \$999

Anonymous
Madelyn R. Adams
Samuel E. Allen
Paula and Brant Andrews
Sam and Lisa Bacote
Mr. and Mrs. Kendall L. Bailey
Ed Baines and Sherry Boston
Mr. and Mrs. Charles H. Battle, Jr.
Mr. and Mrs. Andrew T. Bayman
Bob Beebe
Susan R. Bell
Kevin Belote
Richard S. Bent
Lee and Bob Birdsong
Michael G. Bisciotti
Mrs. Furman Bisher
William P. Blalock
Bloomberg Philanthropies
Ross Boatwright
Elizabeth and Stuart Bondurant
Nisha and Edward Botchwey
Mr. and Mrs. William R. Bridges, Jr.
Jeanie Brieske
Brighthouse, LLC
Bright Wings Foundation
Judge and Mrs. Robert F. Chapman
Jeannette L. Chu
Kate Chura
The Cobb Community Foundation
Corporate Volunteer Council*
Paul and Lisa Cox
Jim and Ann Curry
Michael L. DeHart
Mr. and Mrs. David W. Deiters, Jr.
Mark and Kristen DiCristina
Mr. and Mrs. Willis Dobbs
Cynthia Ethridge
Martha and Mark Fair
Sarah and David Falgoust
Jay Farris
John and Lisa Fleming
Thomas Franklin
Gay and Erskine Love Foundation, Inc.
Dr. John and Tory Haberlen
Marti and Sam Hagan
Michael B. Hagearty
Cheryl and James Harris
Hank Harris
Joe Harris
Sylvia and Charles W. Harrison
Don Harte
Charles Hoffecker
Bill Hollett
Dabney Hollis
The Hollis Family
Dr. and Mrs. Linton C. Hopkins, III
The Hon. and Mrs. Willis B. Hunt, Jr.
Joi and Ira Jackson, Jr.
Nancy and Douglas James
Diane and Rick Jerue
Robert S. Jordan
Trevelino Keller
Tiffany and Bruce Kirst
Ruth and Reese Lanier
Dr. Cynthia Crain and Dr. Dwight Lee
Douglas B. Leeson
Mr. Jeff Levy
Al and Carroll Lindseth
Cheryl Lomax
Charles A. Long
Jennifer Ware McCrary
Brittany and John Molinaro
Sandra Moreland
Monique and Michael Mosley
Jennifer and Frank Mummert
Lindsay and Robert Murphy
Tracy Nailor
Tamara S. Nash
National Christian Charitable Foundation, Inc.
National Philanthropic Trust
Kamau and Felicia Nickerson
Courtney and Chris Pare
Perimeter Concourse Capital, LLC
Cynthia A. Petersen
Jim Platt
Louise and David Poer
Alicia Porche-Turpeau
Charles N. Pursley
Mr. and Mrs. Keene Reese
Drew Reifenberger
Charisse K. and David Richardson

Friend

\$50 – \$249

Anonymous
Nicole M. Adams
Mrs. Thomas Addison, Jr.
Jeffrey Ader
Jane Agati
Mr. and Mrs. David Aldridge
Elaine and Glen Alsobrook
American Express Charitable Fund
Kathy Anderson
Ronen and Hollie Arad
Mr. and Mrs. Michael D. Armstrong
Artlite Office Supply Co.
Elizabeth Asbury
Marisa Atencio
Joan R. Aton
Heather and Brian D. Batchelor
Michael C. Battle
Michael Baumgartner
Kim Beach
Fern Beavers
Tommy Beman
Richard S. Bent and J. Renee Kastanakis
Jenni and Dana Blankenhorn
Jessie Bond
Erin and Pete Boorn
Solomon Brannan
Charles Brigham
Christy Brimmer
Gary Brochin
Debra Brook
Donna McMurrey Brown
Jason Brown
Leesa Brown
Joe and Lucy Bruckner
Fred Bryant
Ruth and Reese Lanier
Blair and David Burdette
Virlyn W. Burse
Phil and Helen Carlock
Tom Caudell
Beth Chandler
Nathan David Chapman
Phyllis and Tim Christian
Cathy C. Christians
Amy Clarke
Jerry Clay, Jr.
Tom Coco
Heather Collingwood
Reid and Michael Connor
Charles Corkran
Stephen Craine
Armethia and Andrew Crockett
Robin and Stockton Croft
Michael and Myric Crowell
Christian Geltz, D.O.
Miles Daly, Jr.
Bryan Debarry
Colette and Michael Deihl
Wendy and Willis Dobbs
Tracy and Gregory Drew
Martin P. Dugan
Kathy and Bill Dukes
Mr. and Mrs. Eric T. Duncan, Jr.
Richard Eaton

*In-Kind Donor

Karen Eldridge
Rodney Fernandes
Denice Firor
Rhonda Fischer
Daniel Fishbein
Kim and Jay Fledderman
Kim Foland
Claire and Ron Francis
GE Foundation
Edward Nathaniel Gadsden, Jr.
David H. Gambrell
Esther Gargues
Michelle and Tim Gay
Taeko Genka
Jeanissa Ginn
Jillian and Raymond Giornelli
Edward Godfrey
Mike Graham
Mr. and Mrs. John Green
Nesbut Green
Shauna and Andy Greene
L. Hill Griffin
Diane M. Gunn
Mary Stewart and Chris Hagy
John W. Hall
Luis Hall
P. Russell Hardin
Mikki K. Harris
HAR-BUR Construction Company, LLC
Charles R. Hatcher, Jr.
Anita Haugabrook
Robert W. Hearn, Jr.
Nathan and Kathy Hendricks
Gary M Henschen
Robert T. Henson
Lisa Hoggard
Susan Hogshead
Holy Innocents' Episcopal School
Mark Howard
Pam Howard
Pauline A. Howes
Hunter R. Hughes
Mr. and Mrs. Charles D. Hurt, Jr.
Heather Inmantry
Frank Inman
Jane and Clay Jackson
Eugene and Karleen James
Lindsey and Kevin James
James M. Jarboe
Karla Jones
Roger and Beverly Kaiser
Elena Kaplan
Sandra Kellner
Ralph Kepple
Hank D. Kerfoot, III
David Robert Kesterton
Yuzana Khin
Kirkwood Neighbors' Organization
Deborah Knight, Ph.D.
Elizabeth Kuney
Cynthia Kurczewski
Steven Labovitz
Ian G. Laing
Virginia and Thomas Lane
Mary and Joe Lange
Mrs. Joseph Lee
Mrs. Robert G. Lennon
Brenda Lepke
Erin and Scott Lerner
Matthew A. Lieberman
Jeanne and R.T. Litteer
Brittney Lott
David Love
Willis E. Lowe
Kathy and Paul Lukacs
Mr. and Mrs. Bernard Marcus
Marion Dearing and Fleming James
Arthur and Jeanne Martin
James Mauer
Alan McKnight
John G. McNicholas
Suanne and Tom Meyer
Hampton Morris
Doyle and Pat Mote
H. Allen Moye
Mr. and Mrs. John Shurley
Newell Murphy
C.V. Nalley, III
Marian and Albert Nesmith, Jr.
Susan Nowack
Colleen and Sam Nunn
Monica O'Neal
Mindy and Joe Oglesby
Tywonja Orum
Carl H. Parker
Karen Elaine Webster Parks

Eric Payne
Mr. and Mrs. William S. Peebles IV
Carolyn Penn-Hale
Anthony A. Perrigan
Christina Perry
Douglas Peters
Thandie Hazelton Pinkston
Warren Randy Pollard
Eileen McDonnell Poss
Jason William Powell
Village Video Productions Inc
Rc Pruitt
Alan Reeves
Robert B. Remar and Victoria
Greenhood
William H. Rice
Anonymous
Betsy and Haynes Roberts
Lisa Roberts
Sara Kate Roberts
Anthony Ruane
Felix Ruffin
Linda Russell
Wayne Russell
Susan E. Ryan
Robert S. Sandercock
Matthew Sandiford
Steven and Shonali Schattenbergs
Clarence F. Seeliger
Harold Seldon
Ramon and CeCe Selles
Vanderlyn Sewell
Tolbert P. Sexton, Sr.
David Michael Shamel
Mr. and Mrs. Charles B. Shelton, III
Sarah and Roy Simkins
Bill Smith
Elizabeth and Matthew Smith
Garrett Smith
Rebecca Smith
Mildred and John Spalding
St. Pius X Catholic High School
James Stathis
Pinckney Stephens
Linda and Mason Stephenson
Leon Stieb
William Stultz
Patrick Sullivan
Stephanie Surbaugh
Robert B. Taylor
Tom Testa
Thomas Thomson
Lisa Tillman
Mr. Michael Todaro
Jennifer Tucker
Vanderyt Family
Ladye Lynne Vickers
Jacqui Vinson
David Walters
Nia and James Washington
Kristen and Jim Weathersby
Jill White
W Boyce Whitesides
Cathy Wike-Cook
Chris Williams
Mr. and Mrs. Brian Williams
Nyrevere Williams, Sr.
Lynda and Bob Wilson
Wingate by Wyndham Galleria
Nova Witkowski
Andrew Wright
Mr. and Mrs. Carter R. Yates
Camille W. Yow
Judy Oliver Zaban
Mary H. Zeliff

Contributor

\$1 – \$49
Erika Afeman
Joe Allen
Ruben Alvarez
Vicky Alvear
Nanyamka Anderson
Susan Aquino
Donzaleigh Arrington
Melanie and Michael Aycock
Heather Bailey
Connie Baker
Mike Barcus
Marvin and Charlotte Barge
Rosaling Barker
Alvinise Barnes
Arthur P. Beard
Michael K. Bell
Helen Bellamy

Caroline Berney
Gwen Bien-Aime
Henry H. Bierenfeld
Kenneth Blackmon
Amy Blackwell
Stuart and Tanya Brady
Chaquita Bray
April Brown
Kathleen Brownlee
Mark Bryles
Abrien Buice
Shannon Cain
Katherine and Kyle Caldwell
Wren Carlson
Natalie and Sule Carpenter
Tina Carrera
Chuline S. Carson
Yvette Caslin
J Nathan Childers
Sara Kate Roberts
George and Kristina Christy III
Selecia Clayton
Renee and Bernard Cook
June Cooley
Dawn Cooper
Theresa L. Culbreath
Jenny Culler
Viondi Davis
Sara Hawker and Mike DeCarlo
Carol and Frank DeSantis
Jeffery Dixon
Don Doran
Tracy Dowdell
Yvonne and Randall Dragon
Marcy Dunlap
Aaron Earley
Caroline E. Egbula
Gladys El-Amin
Cheryl and Doug Elgin
Erin Ellis
Sateria Evers
Jon and Alissa Fasman
Beatrice Ford
Joseph W. Franklin
Connie Freightman
Veatrice Futch
Gary Gaddy
Charles E. Gardner
Natalie and Tom Gates
Jeff Githens
Shannon and Drew Goines
Sharon Golubic
John Grady
Lillian Graham
Kia Gray
Rebecca Greene
Erin Nelson Griffin
Humberto Guzman
Nancy Habarta
Nobuko Hall
E. Victor Hanson
Will Haraway
Smyth Harper
James and Anissa Harris
Leon Harris
Naomi Hawker
Roy Herring
Sonia High-Smith
Cenobia and Dwayne Hilton
Lawanda Hodges
William Holton
Carla and Ronald Homer
Sherri Hudson
Elizabeth and Bill Humphries
Betty Hyman
Joi Jackson
Larresia Jackson
Nytavia Jackson
Katie Johnson
Kara Jones
Shaina Jones
Aimedra Kelley
Jennifer Kelley
Kevin Kirchner
Mickey Knox
Kathleen Kray
Fiscal Accounting Services, LLC
Heather Lakes
Cathy Lawrence
Assad Lazarus
Susan Leiner
George Lima
Andrew and Karin Lovell
Shawn Luton
Bryant and Kimberly Marks

Phil Martin
Patrick May
Felicia Mayer
Colleen McGhee
Ms. Mary McWhirter
Keith Meadows
Susan Mendelsohn
Anastashia Miller
Terry Mitchell
Mia Moreland-Howard
Nellie and Edward Morris
Tamara Mosley
Dennis N. Moss
Nimat Muhammad
Dorian Murry
Aletha Myrick
Constance Nichole Nunnally
Liv and Edward Nyankori
Brandi and David O'Haren
E. Christy Onyeabor
Amanda Ouzts
Amanda Pace
Hollie Page
Alysis Pearson
Henry Pettway
Stacy and Spencer Phillips
Cheryl and Reginald Phipps
Cynthia Pierce
Sidney Pike
Rachael and David Pocklington
Nicole Polley
Deyvi and Greg Portee
Jamie Ravenscraft
David Read
Matt Recio
Kristine Rees
Corliss Reese
Gary and Cheryl Reid
Vielka Reina
Carolina Renjifo
William Ribbs
Callen Rich
Douglas Rieder
Mario E. and Ashley C. Rivera
Hal Runkel
Timaley Russell
Michael Sabo
Laura Sanchez
Iliona Sanders
Cornesha Scott
Kimberly Searcy
Jessica Seares
Rebecca Serna
Aaliya Shakir
Geri Sheats
Mack Shoats, Jr.
Tris Sicignano
Adrian and Luana Slaughter
Moreland Smith, Jr.
Evan Smith
Michelle Smith
Cadence and David Spearman
Heather Staniszewski
Lucy Steward
Maggie Stewart
Emily and Bengt Stomquist
Ta'Ressa Stovall
Carla Strickland
Travis Stroud
Maria Mollise and Robert J. Svedberg
Marla Talbot
Tim Thacker
Sharon and William Thomas
Kymberly Travis
Mike Ussery
Eric Ingram
Herman Vetter
Mary and Michael Vozel
Richard D. Wagner
Pattie and James Wait
Kelly and Todd Walker
Jennifer Wallin
Kimberly Watts
Hazel Wesley
Belinda and Thomas Williams
Chanda Williams
Robert T. Woods
Sheila Wyatt
Lindsay Wyczalkowski
Katrina Yielding

East Lake Invitational Hosted by Billy Andrade and Stewart Clink

Event Sponsor

The Coca-Cola Company
Crawford Investment Counsel, Inc.
E*TRADE
EMC Corporation
Premiere Global Services, Inc.

Official Airline Sponsor

Delta Air Lines

In-Kind Donations

William T. and Jody L. Andrade
Beringer
Arthur M. Blank
Hank Bremer
Lisa and Stewart E. Cink
Phil Ehart
Mike Eruzione
Sandy Koufax
National Distributing Co.
PGA TOUR, Inc.
Alex Robertson
United Distributors
Ron White

Contributors

Mr. Jeffrey D. Armstrong
John Bardis
Dr. Jay Berenter
Bob and Lee Birdsong
Mark Bistline
Mike Black
Mr. and Mrs. Marc Brennan
Tom Clark
Kenny Coleman
Kevin Connelly
Larry Cooper
Ann and Thomas G. Cousins
Mr. and Mrs. John H. Crawford, IV

Cummins Power South, LLC
Data Blue
Mr. & Mrs. Jay M. Davis
Mike DeHart
Nasha Dixon
Thomas Dowd
Brent Dutson
E*TRADE
Equifax, Inc.
Jeff Esposito
Mr. and Mrs. Alan Fairgrievs
Ms. Lisa Fearon
First Data Corporation
FreshPoint Atlanta
Richard Gilbert
Todd Hannon
Scott D. Hansen
Howard S. Harris
Sylvia and Charles W. Harrison
Mr. and Mrs. Doug Haugh
Roger Hoit
Barry Hyde
Pekka Ignatius
Jane and Clay Jackson
Jewish Federation of Greater Atlanta
Sally and Warren Jobe
John Deere
Mr. and Mrs. Mitchell W. Kahlert
Jason Kane
Maureen Kelly
Arvind Krishnaswami
Marty Kogon
Kelly Kokias
Mr. and Mrs. Joe Lange
Mr. and Mrs. Scott Leibold
Will Lukow
Mansfield Oil
Mr. and Mrs. Mark McGahan
Juliette Minutaglio
Marshall Mizell
National Distributing Company, Inc.
Martin M. Neary
Our Family For Families First
Mr. and Mrs. Charles F. Palmer
Tim Peabody
Ira G. Pearl
PGA TOUR, Inc.
Mr. John Robertson and Ms. Kyra Phillips
Mr. and Mrs. David M. Ratcliffe
George Render
John Rettiger
Mr. and Mrs. Hamilton Reynolds
Stephen Riddell
Dr. Warren Ross
Justin Ryan
Mr. and Mrs. Woody Simmons
Southern Company
Randall Spell
Patty Stafford
Mr. and Mrs. Bahnson Stanley
Peter Stewart
Tim Sullivan
Sunbelt Structures, Inc.
Jen Swindall
Scott Tapp
United Distributors
Universal Joint
Mr. and Mrs. Mark Verrill
Paul Voss
Geoff Walker
Walmart Stores, Inc.
Jason Whitecliffe
Michael D. Woodson
Christian Yarbrough
John Yovanovich
ZWJ Investment Counsel

IN HONOR

Kendall Bailey

Richard D. Wagner

Arthur Blank

Pam and Rick Burton

Janice Burgess

Pam and Rick Burton

Pam and Rick Burton

Susan Hogshead

Ann and Thomas G. Cousins

Pam and Rick Burton
CF Foundation
Cathy C. Christians
Council for Quality Growth
Michael B. Hagearty
Mr. and Mrs. John Shurley
National Christian Charitable Foundation, Inc.
Mario E. and Ashley C. Rivera
Sarah and Roy Simkins
Rebecca Smith
Linda and Mason Stephenson
Robert J. Svedberg and Maria Mollise
Lois and Danny Yates
Camille W. Yow

Cousins Family

Nathan and Kathy Hendricks

Jay Davis

Jewish Federation of Greater Atlanta

J. Don and Clara Edwards

Dr. Dwight Lee and Dr. Cynthia Crain
Carol and Tim Naughton

Greg and Lillian Giornelli

Jim and Ann Curry
Lynda and Bob Wilson

Mike Greto

Lois and Danny Yates

Michael B. Hagearty

L. Hill Griffin

Charles and Sylvia Harrison

Elaine and Glen Alsobrook
Pam and Rick Burton
Patty Stafford

Linton C. Hopkins, III

Mary H. Zeliff

Mary Ellen and John Imlay

Pam and Rick Burton

Lindsey James

Marion Dearing and Fleming James

Ralph Kepple

Hank D. Kerfoot, III

Patricia W. Lamar

Anonymous

Frank Merritt

Carol and Larry Gellerstedt

Leslie Peavy

Pam and Rick Burton

Capt. James W. Pollard, USMC

Warren R. Pollard

Debbie Sineath Scott

Pam and Rick Burton

Mr. and Mrs. Dan Smith

Kathy and Bill Dukes

Mrs. F. Morgan Taylor, Jr.

CF Foundation

Gertrude Williams

Sylvia and Charles W. Harrison

Mrs. Charles R. Yates

Mrs. Thomas Addison, Jr.
Thomas Franklin
Elizabeth Watkins

TOUR TRIBUTES

Bob Anderson

Kathy Anderson

Charlie Bloodworth

Tim Christian

William Lee Dvorak

Mr. and Mrs. Charles B. Shelton, III
Linda and Mason Stephenson

CHARLES R. DREW CHARTER SCHOOL JUNIOR AND SENIOR ACADEMY CAPITAL CAMPAIGN

Acuity Brands, Inc.
Anonymous
Arthur M. Blank Family Foundation
Bloomberg Philanthropies
Annie E. Casey Foundation
CF Foundation
CF Foundation in honor of Taylor Glover
CF Foundation in honor of George Wirth
Chatham Capital
Chick-fil-A Foundation
Cathy C. Christians
The Coca-Cola Foundation, Inc.
Cooper Family Charitable Foundation, Inc.
The Correll Family Foundation, Inc.
Cousins Properties, Inc.
Crawford Investment Counsel, Inc.
John Hull Dobbs Trust
Dr. and Mrs. J. Don Edwards

Sharon and Jim D. Edwards
Equifax Foundation
First Presbyterian Church (Albany, GA)
A friend of East Lake Foundation and Drew Charter School
A friend of Drew Charter School
Bill and Melinda Gates Foundation
Georgia Power Foundation, Inc.
Georgia-Pacific Foundation, Inc.
The Imlay Foundation, Inc.
E. Neville Isdell
The Kendeda Fund
Dr. Cynthia Kuhlman and Dr. Kip Sengstock
The Marcus Foundation
Tamara S. Nash
David and Cecelia Ratcliffe
Robertson Foundation
O. Wayne Rollins Foundation

Matthew Sandiford
Sartain Lanier Family Foundation
Rebecca Smith
Southern Company Charitable Foundation, Inc.
State of Georgia
Linda and Mason Stephenson
SunTrust Bank Trusteed Foundations:
Harriet McDaniel Marshall Trust and Thomas Guy Woolford Charitable Trust
SunTrust Foundation
Tull Charitable Foundation, Inc.
Brenda and Aaron Turpeau
Walton Family Foundation
Robert W. Woodruff Foundation, Inc.
Lois and Daniel Yates, III
Camille W. Yow

East Lake Staff

Daniel J. Shoy, Jr., *President*
Rhonda Fischer, *Chief Operating Officer*
Sharon Hall-Thomas, *Manager of Operations and Special Initiatives*
Brian P. Williams, *Director of Finance*

Amy Macklin, *Vice President of Resource Development*
Jessie Bond, *Grants Manager*
Brittany Glenn-Molinaro, *Development - Major Gifts*
Joi Jackson, *Development Associate*
Elizabeth Kuney, *Volunteer and Special Events Manager*
Corneshia Scott, *Development Coordinator*

Jennifer McCrary, *Manager - Resident & Community Support Program*
Tywonia Orum, *Coordinator - Resident & Community Support Program*

Nyre Williams, *Director - The First Tee® of East Lake*
Jeff Dunovant, *Assistant Director - The First Tee® of East Lake*
Charles W. Harrison, *Instructor - The First Tee® of East Lake*
Brittany Lott, *Instructor - The First Tee® of East Lake*

Kevin Parker, *Academic Support Coordinator - CREW Teens*

East Lake Foundation Board of Directors

Dr. Lawrence M. Schall, <i>Chair</i>	President, Oglethorpe University
Lillian Cousins Giornelli, <i>Vice Chair</i>	Executive Director, CF Foundation
Richard W. Courts IV	Principal, Atlantic Realty Company
Thomas G. Cousins	Founder and Chairman Emeritus, Cousins Properties, Inc.
J. Alexander M. Douglas, Jr.	President, Coca-Cola North America and Global Chief Customer Officer, The Coca-Cola Company
Dr. James Don Edwards	Retired J.M. Tull Professor of Accounting, Terry College of Business at the University of Georgia
John R. Frazer	Managing Director of Client Development, GenSpring Family Offices
Doug Hertz	President and CEO, United Distributors, Inc.
Robert L. Johnston	President and Founder, First Communities
Mark Lazarus	Chairman, NBC Sports Group, NBC Universal
Cheryl Lomax	Senior Vice President, Global Marketing and Corporate Affairs, Bank of America
William Pate	President and Chief Executive Officer, Atlanta Convention and Visitors Bureau
Alex Robertson	Managing Partner, Tiger Management LLC
Ray M. Robinson	President Emeritus, East Lake Golf Club and Chairman of the Board, Citizens Trust Bank
Chris Womack	Executive Vice President and President, External Affairs, Southern Company

East Lake Foundation: Transforming Place, Building Promise

2606 Alston Drive | Atlanta, GA 30317 | 404-373-4351 | www.eastlakefoundation.org

Join the conversation on Facebook: www.facebook.com/eastlakefoundation and Twitter: @EastLakeFound